

Compiled by Jim Hague



The Bumper Book

Boots

Book of

Die Hawk

is

He
Crie Hauock
Booke of
Dottes

The Bumper Booke

The collected Bookes of Dottes



Compiled by Jim Hague

Ye Crie Havoc Booke of Dottes

Tune collection and presentation is copyright © Jim Hague 2013-2024 and is licensed under a Creative Commons Attribution-NonCommercial-ShareAlike 2.0 UK: England & Wales License. Details at <http://creativecommons.org/licenses/by-nc-sa/2.0/uk/>.

Some tunes are reproduced from Paul Hardy's Session Tunebook (www.paulhardy.net).

The right of Jim Hague to be identified as the author of this work has been asserted by him in accordance with the Copyright, Designs and Patents Act 1998.

First published in the UK 2013 by Jim Hague.

Second printed edition 2019. Third printed edition 2024.

The Booke of Dottes is a constant work in progress. The latest version is always available from <http://dottes.cryhavoc.org.uk/>. This is issue 439, generated 7th November 2024.

Technical data

Book sources can be found at in a Git (<https://git-scm.com/>) repository at <https://git.lunch.org.uk/CryHavoc/dottes/>. Tunes are in Chris Walshaw's abc notation (<http://abcnotation.com/>).

Music typeset by Jef Moine's abc2ps (<http://moinejf.free.fr/>). Document typeset by L^AT_EX using X_EL^AT_EX from T_EX Live on a Debian Linux system. Grateful thanks to all contributors to abc, L^AT_EX, Debian, Linux and related software.

to Jane
for the music, and the dance

Vandals of
Hammerwich



William and Nancy



Winster Processional
(The Morris March)



Young Collins



Music forms a core part of Cry Havoc Botley Morris. Of course, the musicians provide the music we dance to. And after every practice or dance-out, there is a music-playing session.

Havoc musicians come in all shades of experience and ability. This collection is intended to help those like me who are inexperienced with instrument and folk music generally, but have a little musical background.

Being folk tunes, many of the tunes herein have many variations. The music presented here is my attempt at reflecting what the musicians of Cry Havoc play. I'm in no way suggesting that they are in any way *correct*. This is just how we go about them.

Introduction

Valentine



Sweet Jenny Jones



Step n' Fetch Her



Step Back



Skirmish (British Grenadiers)



Side Steps



The majority of tunes in this book have no identifiable author, and are unquestionably in the public domain. Rather than litter the pages with *Trad.* or *Anon.*, I have left them unattributed. Some, however, may have an identifiable author or arranger and copyright unquestionably remains with that person. I believe these tunes to enjoy widespread currency on the folk music scene, and therefore there is at least tacit approval by the authors for their dissemination. If this is not the case, please contact me at dottes@cryhavoc.org.uk and I will remove the offending tune.

This book has an accompanying website, <https://dottes.cryhavoc.org.uk>. It's updated from time to time with the latest tunes we're playing. As well as the written music (the dots), you can listen to the computer play each tune and its chords, or download the audio or the dots. For those who want to learn by ear, there's a page for each tune with the computer playing the melody only, at four different speeds. You can also download the latest version of the various print books, formatted for A4 or A5 size paper, to print at home.

Finally, many, many thanks to all who have helped me with this project, in particular fellow Havocs KateK, Nerys, MickP, LouisT, Susie and Ed. And most especially to Jane, without whose enthusiasm, support and encouragement this would never have been possible.

About Cry Havoc

Cry Havoc are a friendly mixed Cotswold Morris side based in Botley, Oxford. We practice between September and April on Thursday evenings at the Botley Womens' Institute Hall, North Hinksey Lane, Botley, Oxford OX2 0LT and dance out in the summer months at locations around Oxfordshire.

The Postman's Knock

Musical notation for 'The Postman's Knock' in G major. The melody is written on a treble clef staff. Chords are indicated above the staff: D, G, D, A, D.

Rigs of Marlow

Musical notation for 'Rigs of Marlow' in G major. The melody is written on a treble clef staff. Chords are indicated above the staff: G, D, G, D, G.

Ring O' Bells

Musical notation for 'Ring O' Bells' in G major. The melody is written on a treble clef staff. Chords are indicated above the staff: G, D, C, G, D, G, D.

Shave the Donkey

Musical notation for 'Shave the Donkey' in G major. The melody is written on a treble clef staff. Chords are indicated above the staff: G, C, G, D, and a first ending with G, D, G, followed by a second ending with G, D, G.

Shepherd's Hey

Musical notation for 'Shepherd's Hey' in G major. The melody is written on a treble clef staff. Chords are indicated above the staff: G, C, G, D7, G, C, D7, G.

Shooting (Beaux of London City)

Musical notation for 'Shooting (Beaux of London City)' in G major. The melody is written on a treble clef staff. Chords are indicated above the staff: G, D, G, D, G.

Find out more at <https://www.cryhavoc.org.uk/>, or email bag@cryhavoc.org.uk for more information. Would-be dancers or musicians always welcome. The Booke of Dottes was first produced to mark Cry Havoc's 20th anniversary in 2013, and substantially updated for our 25th anniversary in 2018 and again for our 30th anniversary in 2023.

	Ladies Pleasure
	Lads-a-Bunchum
	Laudnum Bunches
	Lillibulero
	Monck's March
	Mountain Goats

Contents

Introduction	i	Brighton Camp (The Girl I Left Behind Me) . . .	12
About Cry Havoc	ii	Buttered Peas	13
Session tunes	1	Le Canal En Octobre	14
A La Mode De France	3	Captain Lanoe's Quick March	15
Albert Farmer's Bonfire Tune	4	Captain Rock's Farewell	16
All In A Garden Green (Harwood Hall)	5	Click Go the Shears (Ring The Bell, Watch- man)	17
Argeers (The Wedding Night)	6	The Dancing Oolert	18
Astley's Ride	7	Davy Davy Knick Knack	19
Bagpipers	8	Elizabeth Clare	20
Battle of the Somme	9	Emma From Finland	21
Bear Dance	10	Enrico	22
Bonny Kate	11		

Greenham (Long Odds)



Haste to the Wedding



Highland Mary



Highland Mary (Old Tom of Oxford)



Hunt the Squirrel



Jenny Lind



Si Bheag Si Mhor	69	The Banks of the Dee	91
Slängpolska 32	70	Bean Setting	92
The Sloe	71	Black Joke	93
Soldier's Joy (The Forester)	72	Blue Bells of Scotland	94
Spoostiskerry	73	Bobbing Around	95
Springvals	74	Bonny Green Garters	96
Sussex Cotillion	75	Constant Billy	97
Teatree Waltz	76	Country Gardens	98
Theme Vannetaise (Twiglet)	77	Dogs of War	99
Three Around Three (The Pleasure Of The Town)	78	Getting Upstairs	100
Tip Top Polka	79	Greenham (Long Odds)	101
Tom Tolley's Hornpipe	80	Haste to the Wedding	102
The Twister	81	Highland Mary	103
Valse Musette	82	Highland Mary (Old Tom of Oxford)	104
Wals voor Polle	83	Hunt the Squirrel	105
Whinshields Hornpipe	84	Jenny Lind	106
Will's Way	85	Ladies Pleasure	107
The Winster Gallop	86	Lads-a-Bunchum	108
Morris tunes	87	Laudnum Bunches	109
Balance the Straw	89	Lillibulero	110
Banbury Bill	90	Monck's March	111
		Mountain Goats	112
		The Postman's Knock	113

Balance the Straw

Banbury Bill

The Banks of the Dee

Bean Setting

Black Joke

Blue Bells of Scotland

Detailed description: This section contains six musical staves, each with a title on the left and a corresponding musical score on the right. The staves are for 'Balance the Straw', 'Banbury Bill', 'The Banks of the Dee', 'Bean Setting', 'Black Joke', and 'Blue Bells of Scotland'. Each staff includes a treble clef, a key signature of one sharp (F#), and a 4/4 time signature. Chord symbols (G, D, D7, C, A7) and triplets are placed above the notes to indicate accompaniment. The 'Blue Bells of Scotland' staff is notably simpler, consisting of a single melodic line.

Session tunes

Music commonly played at Cry Havoc sessions

1

Theme Vannetaise
(Twiglet)



Three Around Three
(The Pleasure Of The
Town)



Tip Top Polka



Tom Tolley's
Hornpipe



The Twister

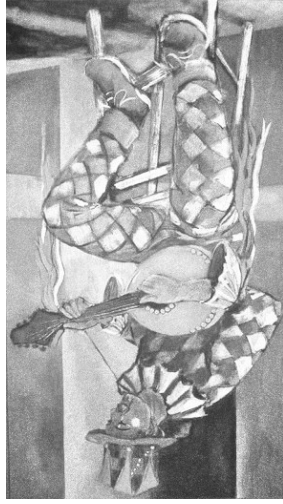


Valse Musette



This book provides the dots for the tunes commonly played at Cry Havoc music sessions. The set of tunes played at sessions does tend to vary over time. Some tunes are perennial favourites and so are included here automatically. Others appear less regularly. I aim to only include tunes that I remember hearing at a session in the not too distant past, but nobody gets a log of what gets played, so the choice is imprecise. And to be completely honest, some tunes are there simply because I want them to be there. Any complaints? Good.

Barbara Payne, *Mandoharleguin*



	Teatree Waltz
	Sussex Cotillion
	Springvals
	Spooiskerry
	Soldier's Joy (The Forester)
	The Sloe

A La Mode De France

$\text{♩} = 160$

Change: Ruffy Tufty.

3

Seacourt Bridge

Seven Stars (The Moon And Seven Stars)

Shandy Hall

The Sheriff's Ride

Si Bheag Si Mhor

Slängpolska 32

Musical score for "Albert Farmer's Bonfire Tune" in G major, 4/4 time. The score consists of four staves of music. The first staff begins with a repeat sign and a key signature of one sharp (F#). The notes are: G4 (half), A4-B4 (quarter), C5 (quarter), B4-A4 (quarter), G4 (half). The second staff continues with: G4-A4 (quarter), B4-C5 (quarter), B4-A4 (quarter), G4 (half), A4-B4 (quarter), C5 (quarter), B4-A4 (quarter), G4 (half). The third staff continues with: G4 (half), A4-B4 (quarter), C5 (quarter), B4-A4 (quarter), G4 (half). The fourth staff continues with: G4-A4 (quarter), B4-C5 (quarter), B4-A4 (quarter), G4 (half), A4-B4 (quarter), C5 (quarter), B4-A4 (quarter), G4 (half). The tempo is marked as quarter note = 160. Chord symbols are placed below the notes: D, A, Em, D, D, A, D, A, D, D, D, A, Em, D, D, A, D.

Albert Farmer's Bonfire Tune

Musical score for "Rochdale Coconut Dance" in G major, 4/4 time. The score consists of six staves of music. The first staff begins with a repeat sign and a key signature of one sharp (F#). The notes are: G4 (half), A4-B4 (quarter), C5 (quarter), B4-A4 (quarter), G4 (half). The second staff continues with: G4-A4 (quarter), B4-C5 (quarter), B4-A4 (quarter), G4 (half), A4-B4 (quarter), C5 (quarter), B4-A4 (quarter), G4 (half). The third staff continues with: G4 (half), A4-B4 (quarter), C5 (quarter), B4-A4 (quarter), G4 (half). The fourth staff continues with: G4-A4 (quarter), B4-C5 (quarter), B4-A4 (quarter), G4 (half), A4-B4 (quarter), C5 (quarter), B4-A4 (quarter), G4 (half). The fifth staff continues with: G4 (half), A4-B4 (quarter), C5 (quarter), B4-A4 (quarter), G4 (half). The sixth staff continues with: G4-A4 (quarter), B4-C5 (quarter), B4-A4 (quarter), G4 (half), A4-B4 (quarter), C5 (quarter), B4-A4 (quarter), G4 (half). The tempo is marked as quarter note = 160. Chord symbols are placed below the notes: G, D, D7, G, C, G, D, G, D, D, G, D7, G, D7, G, D, Am, D, D, G, D, D, C, G, D, D, Am, G, Em, D7, G, Am, Em, Em.

Salmon Tails

Ruffy Tuffy

Rub-a-dub (Stockport Polka)

La Roulante

The Rogues' March

Rochdale Coconut Dance

All In A Garden Green Harwood Hall

$\text{♩} = 90$

Musical notation for 'All In A Garden Green' in G major, 3/4 time. The piece consists of three staves of music. The first staff (measures 1-8) has chords: G, D, Em, G, C, Am, D, C, G, Am, D7, G. The second staff (measures 9-13) has chords: G, C, D7, G, Em, Am, D7, G. The third staff (measures 14-17) has chords: Am, Bm, C, Am, D, G. The key signature has one sharp (F#).

Change: Gathering Peascods. From Paul Hardy's Session Tunebook.

New Road To Alston

Musical notation for 'New Road To Alston' in G major, 3/4 time. The piece consists of one staff of music with chords: Am, Em, Am, Em, Am.

Orange in Bloom
(Sherborne Waltz)

Musical notation for 'Orange in Bloom' in G major, 3/4 time. The piece consists of one staff of music with chords: G, Em, G, Am, Em, G, D7, G.

The Oyster Girl

Musical notation for 'The Oyster Girl' in G major, 3/4 time. The piece consists of one staff of music with chords: G, D, G, D.

The Plane Tree

Musical notation for 'The Plane Tree' in G major, 3/4 time. The piece consists of one staff of music with chords: Em, Am, G, C, D, D, B.

Poplar Grove

Musical notation for 'Poplar Grove' in G major, 3/4 time. The piece consists of one staff of music with chords: G, D, G, C, D. The final measure contains a triplet of eighth notes.

Quarter Brawls

Musical notation for 'Quarter Brawls' in G major, 3/4 time. The piece consists of one staff of music with chords: Em, G, G, D, Em, G, G, D.

Astley's Ride

♩ = 180 G

5

8

13

Philip Astley's *Ride* was a circular arena in which the famous equestrian demonstrated his trick riding skills. When, in 1770, he added jugglers, acrobats and a clown to his show, he invented an art form that spread rapidly around the world. Though as often happens with inventors, it was his imitator and rival Charles Dibdin who gave it the name we know today; the circus.

7

Just As The Tide Was
Flowing

King Of The Fairies

Lanigan's Ball

Laridé 6

Louth Quickstep

Maguire and
Patterson

The melody should be accompanied by a continuous drone on the string below on the fiddle. The chords are a suggested drone.

13
C
8
G D G
5
C
♩ = 140
C
G

Bagpipers

Inisher
G Em C D

Iron Legs
D A D A D A D G Bm A

An Italian Rant
Gm Dm Cm Dm Cm Dm Gm

Jamaica
G C G D G

Jamie Allen
G D7

Jessie's Hornpipe
G C D G D

Battle of the Somme

Pipe Major William Laurie

♩ = 120

William Laurie was Pipe Major of the 8th Argyllshire Battalion of the Argyll and Sutherland Highlanders in 1914. Posted to France in 1915, he became ill in 1916 due to trench conditions. Invalidated to England, he died in the Third Southern General Hospital in Oxford aged 35, one of piping's greatest premature losses.

9

Grandfather's Tune

Green Mountain
Petronella

Harper's Frolick

Herbert the Sherbert

Horse's Brawl (Le
Bransle des Chevaux)

L'Inconnu de Limoise

Unless we're feeling contrary, in which case it'll happen somewhere near the start of a session. A foot stomping pulse behind this Flemish polka and its inevitable predecessor L'aridè 6 typically marks the end, or somewhere near the end, of a Havoc evening.

Bear Dance

♩ = 120

The Exploding Potato

The Extension Reel

The Fiery Clock Face

From Night Till Morn

The Gamekeeper's Cottage

Gathering Peascods

Bonny Kate

$\text{♩} = 180$

Chords: G, G, C, G, Em, Am, G, D, D, G, Am, Bm, C, D, G, D, G, C, D, G.

Change: Harper's Frolick.

Click Go the Shears
(Ring The Bell,
Watchman)

Chords: G, C, G, A7.

The Dancing Oolert

Chords: D, C, D, Em.

Davy Davy Knick
Knack

Chords: G, D.

Elizabeth Clare

Chords: G, D, C, G, G.

Emma From Finland

Chord: Dm.

Enrico

Chords: D, G, D, D, G, A.

Musical notation for two songs. The first staff is for 'Brighton Camp' and the second for 'The Girl I Left Behind Me'. Both are in G major and 4/4 time. The 'Brighton Camp' staff includes a tempo marking of 180 and a note value of 1/2. Chords are indicated below the notes.

Brighton Camp
The Girl I Left Behind Me

Musical notation for six songs. From top to bottom: 'Bonny Kate', 'Brighton Camp (The Girl I Left Behind Me)', 'Buttered Peas', 'Le Canal En Octobre', 'Captain Lanoes' Quick March', and 'Captain Rock's Farewell'. The first two are in G major, while the others are in D major. Chords are indicated below the notes.

Bonny Kate
Brighton Camp (The Girl I Left Behind Me)
Buttered Peas
Le Canal En Octobre
Captain Lanoes' Quick March
Captain Rock's Farewell

Buttered Peas

$\text{♩} = 180$

D G D Em A

5 D G D D

9 D A D Em A

13 D A D A7 D

13

All In A Garden
Green (Harwood
Hall)

G D Em G C Am D C G Am D7 G

Argeers (The
Wedding Night)

G D D G D7 G

Astley's Ride

G D C G

Bagpipers

C G

Battle of the Somme

G D C D

Bear Dance

Em D

Captain Lanoe's Quick March

♩ = 160

Chord progression for measures 1-13: G, G, D, G, D, Em, G, G, D, G, D, G, B, B, D, G, G, Em, Em, C, G, D, G.

Measures 1-4: G, G, D, G, D, Em

Measures 5-8: G, G, D, G, D, G

Measures 9-12: B, B, D, G, G

Measures 13: Em, Em, C, G, D, G

15

A.(A2.B2)4

Young Collins

♩ = 150

Chord progression for measures 1-8: G, C, D7, G, C, D7, G, C, D7, G, C, D7, G, C, D7, G.

Measures 1-4: G, C, D7, G, C, D7, G

Measures 5-8: C, D7, G, G, C, D7, G, C, D7, G

128

Change: Orange in Bloom (Sherborne Waltz).

Musical score for "Captain Rock's Farewell" in G major, 2/4 time. The score consists of four staves. The first staff has a treble clef and a key signature of one sharp (F#). The second staff has a bass clef. The third staff has a treble clef and a key signature of one sharp. The fourth staff has a bass clef. The tempo is marked as quarter note = 140. Chord symbols G, D, C, and D are placed below the notes. Measure numbers 6, 9, and 17 are indicated.

Captain Rock's Farewell

Keep repeating as long as necessary.

Musical score for "Winster Processional" in G major, 2/4 time. The score consists of two staves. The first staff has a treble clef and a key signature of one sharp. The second staff has a bass clef. The tempo is marked as quarter note = 150. Chord symbols G, D7, and C are placed below the notes. Measure numbers 4 and 5 are indicated.

Winster Processional The Morris March

(A2:B2)

Click Go the Shears Ring The Bell, Watchman

$\text{♩} = 140$

Musical score for 'Click Go the Shears' in G major, 4/4 time. The score consists of three staves of music. The first staff contains measures 1-6 with chords G, C, G, A7, G, C. The second staff contains measures 7-11 with chords D7, G, D7, G, C. The third staff contains measures 12-16 with chords G, D, G, C, D7, G. The piece ends with a double bar line.

First published in 1891 with the title *The Bare-Bellied Ewe* and using the tune of an 1865 US song *Ring The Bell, Watchman* by Henry Clay Work, this song became an Australian classic by the 1950s. The tune was used in 1966 as a jingle accompanying the switch from the pound sterling to the Australian dollar.

(AB)2.(AC)2.A

William and Nancy

$\text{♩} = 150$

Musical score for 'William and Nancy' in G major, 4/4 time. The score is divided into three sections: A, B, and C. Section A (measures 1-3) has chords G, C, G, D7, G, C, D7, G. Section B (measures 4-11) has chords G, C, G, G, C, D7, G, C, G, D7, G, C, D7, G. Section C (measures 12-16) is marked 'Slows' and has chords G, C, G, Em, A7, D7, G, C, G, G, C, D7, G, C, G, D7, G, C, D7, G. The piece ends with a double bar line.

An oolert, or woller, is a name used in Shropshire for a barn owl.

Musical score for 'The Dancing Oolert' in G major, 4/4 time. The score consists of four staves of music. The first staff is marked with measure numbers 12 and 8. The second staff is marked with measure numbers 5 and 130. The third staff is marked with measure numbers 12 and 8. The fourth staff is marked with measure numbers 5 and 130. The key signature has one sharp (F#). The tempo is marked as quarter note = 130.

Sally Kirkpatrick

The Dancing Oolert

Musical score for 'Vandals of Hammerwich' in G major, 4/4 time. The score consists of four staves of music. The first staff is marked with measure numbers 13 and 9. The second staff is marked with measure numbers 5 and 150. The third staff is marked with measure numbers 13 and 9. The fourth staff is marked with measure numbers 5 and 150. The key signature has one sharp (F#). The tempo is marked as quarter note = 150.

Vandals of Hammerwich

A.(AB)⁴

Davy Davy Knick Knack

♩ = 140

5

8

13

19

A.(AB3)2.(AC3)2.A

Valentine

♩ = 120

5

8

13

16

22

124

Change: Michael Turner's Waltz.

8 D G D G C D G D
16 C G D C G Am
24 G D G G C D G D

Elizabeth Clare
Chris Wood

Sing at the start and at the end.

4 D G D A7 D
8 D A7 G A7 D A7 G A7 D A7
17 D Em A7 D G A7 D

My sweet Jen - ny Jones she's the girl I love a - - gol - - len
My sweet Jen - ny Jones she's the girl I love a - - gol - - len
My sweet Jen - ny Jones she's the girl I love a - - gol - - len
My sweet Jen - ny Jones she's the girl I love a - - gol - - len

Sweet Jenny Jones
A.(AB)6.A

Emma From Finland

$\text{♩} = 140$

5 A7

9 Gm Dm

13 A7

1 Dm n.c. 2 Dm

21

A.(A.B.C)4

Step n' Fetch Her

$\text{♩} = 152$

A G C G D 1 G D G 2 G D G

5 B D G D G D G 1 D G 2 D G

8 C Am G C G Am G D G

122

The Exploding Potato

Ed Pritchard

$\text{♩} = 180$

5

9

13

Change: The Extension Reel

A2.(A2.B2)3

Skirmish

British Grenadiers

$\text{♩} = 160$

4

9

13
G D Am G

9
D C Em Am G

5
G D C G

180 = ♩

Ed Pritchard

The Extension Reel

10
D G D G

4
D G D G

A (AB) 4
150 = ♩

Paul Ferrett

Side Steps

The Fiery Clock Face

$\text{♩} = 160$

5 G C D7 G

8 G Am D7

13 G Am D7 G

25

(A2.B3)6

Shooting Beaux of London City

$\text{♩} = 160$

A G D G D G

B G D G D G D G

118

Musical score for 'From Night Till Morn'. The score consists of four staves of music in G major, 4/4 time. The tempo is marked as quarter note = 140. The key signature has one sharp (F#). The chord progression for the first staff is G, D, G, Am, G, D, G, D, G, Am. The second staff continues with G, D, G, C, D, D, G. The third staff includes a first ending bracket with chords G, D, G, Am, G, D, G. The fourth staff continues with D, G, Am, G, D, G.

From Night Till Morn

Musical score for 'Shepherd's Hey'. The score consists of two staves of music in G major, 4/4 time. The tempo is marked as quarter note = 130. The key signature has one sharp (F#). The chord progression for the first staff is G, D7, C, G, D7, G, C, G. The second staff continues with G, D7, C, G, D7, G, C, G. There are two first ending brackets labeled 'A' and 'B' at the end of the second staff.

Shepherd's Hey

(A2.B2)6

The Gamekeeper's Cottage

♩ = 90

G Am G Am G C G Am G Am D G

8 G C Em D C G C Em D G

17 G C Em D C G Am G Am D G

The musical score for 'The Gamekeeper's Cottage' is written in treble clef with a key signature of one sharp (F#). The tempo is marked as ♩ = 90. The piece consists of 17 measures, divided into three systems. The first system contains measures 1-7, the second system contains measures 8-16, and the third system contains measures 17-24. The music features a variety of time signatures: 2/4, 3/4, and 4/4. Chord progressions are indicated above the notes, including G, Am, C, D, and Em. The piece concludes with a double bar line and repeat dots.

27

A.(A.B)3.A

Shave the Donkey

♩ = 152

A G C G D ¹ G D G ² G D G

B D G D G D G ^{1,2} D G ³ D G

The musical score for 'Shave the Donkey' is written in treble clef with a key signature of one sharp (F#). The tempo is marked as ♩ = 152. The piece is structured as A.(A.B)3.A. Section A (measures 1-4) is followed by section B (measures 5-8). Section B consists of three repeated phrases, each with a different ending. The first ending (measures 7-8) leads back to the beginning of section A. The second ending (measures 7-8) leads to a final cadence. The third ending (measures 7-8) leads to a final cadence. Chord progressions are indicated above the notes, including G, C, D, and Em. The piece concludes with a double bar line and repeat dots.

Grandfather's Tune

$\text{♩} = 160$



Musical score for "Grandfather's Tune" in G major (one sharp). The piece is in 2/4 time with a tempo of 160 beats per minute. It consists of four staves of music. The first staff starts with a D chord. The second staff starts with a 5-measure rest. The third staff starts with an A chord. The fourth staff starts with a 13-measure rest. The key signature is G major, and the time signature is 2/4.

Change: The Sloe

29

A.(AB2)4

Rigs of Marlow

$\text{♩} = 144$



Musical score for "Rigs of Marlow" in G major (one sharp). The piece is in 2/4 time with a tempo of 144 beats per minute. It consists of three staves of music. The first staff starts with an A chord. The second staff starts with a 5-measure rest. The third staff starts with a B chord. The key signature is G major, and the time signature is 2/4.

114

Harper's Frolick

$\text{♩} = 160$

1 5 8 13

D D A D D A D A D A D

Detailed description: This block contains the first 13 measures of the piece 'Harper's Frolick'. The music is written in treble clef with a key signature of one sharp (F#) and a tempo of 160 beats per minute. The melody consists of eighth and quarter notes. Chord symbols are placed above the staff: D (measures 1, 2, 5, 6, 10, 11, 12, 13), A (measures 3, 4, 7, 8, 9, 13), and A7 (measure 10). Measure numbers 1, 5, 8, and 13 are indicated at the start of their respective lines.

Change: Three Around Three (The Pleasure Of The Town).

A.(AB)4

Mountain Goats

Ed Pritchard

$\text{♩} = 130$

A G C D A7 D

5 G C G D7 G D7 G

B G D C C D

12 D C D G

Detailed description: This block contains the first 12 measures of the piece 'Mountain Goats'. The music is written in treble clef with a key signature of one sharp (F#) and a tempo of 130 beats per minute. The melody consists of eighth and quarter notes. Chord symbols are placed above the staff: A (measure 1), G (measures 1, 2, 5, 6, 10, 11, 12), C (measures 3, 4, 7, 8, 9, 12), D (measures 5, 6, 10, 11), A7 (measure 10), D7 (measures 6, 7, 11), and D (measures 10, 11). Section markers 'A' and 'B' are enclosed in boxes above measures 1 and 8 respectively. Measure numbers 1, 5, 8, and 12 are indicated at the start of their respective lines.

Musical score for 'Herbert the Sherbert' by Martin Ellison. The score consists of four staves of music in G major (one sharp). The tempo is marked as quarter note = 165. The key signature is G major. The chords used are Em, D, G, C, and Bm. The piece is 13 measures long.

Martin Ellison

Herbert the Sherbert

Musical score for 'Monck's March' by A.(AB2).2.(AC2).2.A. The score consists of four staves of music in G major (one sharp). The tempo is marked as quarter note = 60. The key signature is G major. The chords used are G, D7, C, and Bm. The piece is 21 measures long and includes first and second endings. The sections are labeled A, B, and C.

A.(AB2).2.(AC2).2.A

Monck's March

Horse's Brawl

Le Bransle des Chevaux

$\text{♩} = 180$

17

A *bransle*, or variously *branle*, *brawl*, *brall*, or *brantle* is a type of simple renaissance French dance. The name comes from the verb *branler* (to shake, wave, sway) and refers to the characteristic side-to-side movement of the dancers.

A2.(A2.B2)3

Lillibulero

Henry Purcell

$\text{♩} = 165$

5

9

13

Musical score for 'L'Inconnu de Limoise' in G major, 4/4 time. The score consists of four staves of music. The first staff begins with a double bar line and a repeat sign, followed by a first ending bracket labeled '1' and a second ending bracket labeled '2'. The second staff contains a whole note chord 'Bm'. The third staff contains a triplet of eighth notes. The fourth staff contains a triplet of eighth notes and a tempo marking of quarter note = 104. Chord symbols G, C, D, Em, and Bm are placed below the notes.

Jean-François "Maxou"
Heintzen

L'Inconnu de Limoise

Musical score for 'Launum Bunches' in G major, 4/4 time. The score consists of three staves of music. The first staff begins with a double bar line and a repeat sign, followed by a first ending bracket labeled 'A' and a second ending bracket labeled 'B'. The second staff contains a first ending bracket labeled 'C'. The third staff contains a first ending bracket labeled 'A'. The tempo marking is quarter note = 88. Chord symbols G, D7, C, G, D, and C are placed below the notes.

Launum Bunches

A.(A.B3)2.(A.C3)2

Inisheer

Tommy Walsh

Musical notation for the song "Inisheer" by Tommy Walsh. The piece is in the key of D major (one sharp) and 3/4 time. It consists of four staves of music. The first staff contains measures 1-4 with chords G, Em, C, and D. The second staff contains measures 5-7 with chords G, Em, C, D, and G, including a triplet in measure 7. The third staff contains measures 8-11 with chords C, G, and C, including a triplet in measure 11. The fourth staff contains measures 12-15 with chords C, Am, G, G, D, and G, including a triplet in measure 15. The piece concludes with a double bar line.

A.(BC)6.C

Lads-a-Bunchum

Musical notation for the song "Lads-a-Bunchum" with lyrics. The piece is in the key of D major (one sharp) and 3/4 time. It consists of four staves of music. The first staff is marked with a tempo of 150 and a section label 'A'. It contains measures 1-4 with lyrics: "Oh dear moth-er, what a fool I be, Six young mai-dens came a court-in' me." The second staff contains measures 5-8 with lyrics: "Five were blind and the oth-er coul-dn't see, oh dear moth-er, what a fool I be!". The third staff is marked with a section label 'B' and contains measures 9-11 with chords G, C, D7, G, C, and G. The fourth staff is marked with a section label 'C' and contains measures 12-15 with chords C, G, G, C, D7, and G. The piece concludes with a double bar line.

Musical score for 'Iron Legs' in G major, 4/4 time. The score consists of four staves of music. The first staff begins with a repeat sign and contains measures 1 through 6. The second staff contains measures 7 through 12. The third staff contains measures 13 through 18. The fourth staff contains measures 19 through 24. Chord symbols are placed below the notes: D, A, G, D, G, D, G, F#m, Bm, A, Bm, A, D, A, D, A, D, A, D, A, D, A. A tempo marking of ♩ = 132 is located at the end of the fourth staff.

Iron Legs

Musical score for 'Ladies Pleasure' in G major, 4/4 time. The score consists of four staves of music. The first staff begins with a repeat sign and contains measures 1 through 4. The second staff contains measures 5 through 8. The third staff contains measures 9 through 12. The fourth staff contains measures 13 through 16. Chord symbols A, B, and C are placed in boxes below the notes at the end of each staff. A tempo marking of ♩ = 120 is located at the end of the fourth staff. The text 'A jig from the Field Town tradition.' is written above the first staff.

Ladies Pleasure

A4.B.(C2.B)2

An Italian Rant

$\text{♩} = 95$

1 Gm Dm Cm Dm Cm B \flat Dm Gm

5 Gm Dm Cm Dm Gm Dm Cm B \flat Cm

10 Dm Gm Dm Cm Dm Cm B \flat Dm Gm

37

A.(AB)4

Jenny Lind

$\text{♩} = 150$

1 A D G D A7 D

5 D G D A7 D

8 B C G D7 G

13 C G D7 G

1 G 2 G

106

From Paul Hardy's Session Tunebook.

Musical score for 'Jamaica' in G major, 4/4 time. The score consists of three staves. The first staff is the melody, starting with a repeat sign and a key signature of one sharp (F#). The second and third staves provide harmonic accompaniment. Chord symbols G, D, C, and A are placed below the notes. A tempo marking of quarter note = 180 is located at the bottom right of the score.

Jamaica

Musical score for 'A.(AB)4 Hunt the Squirrel' in G major, 4/4 time. The score consists of four staves. The first two staves are the melody, with a key signature of one sharp (F#). The last two staves provide harmonic accompaniment. Chord symbols G, D, and D7 are placed below the notes. A tempo marking of quarter note = 160 is located at the bottom right. A section marker 'B' is placed below the second staff, and a section marker 'A' is placed below the third staff.

Hunt the Squirrel

A.(AB)4

Jamie Allen

♩ = 160

G D7

5 G C G D7 G

8 G D7

13 G C G D7 G

39

A.(A.B2)4

Highland Mary

Old Tom of Oxford

A G C D7 G D

5 G C D7 G D G

8 B G G C C

13 G D G

We also dance Highland Mary to Highland Mary. If KateK's playing for Highland Mary, we'll dance to this tune.

A little tune Susie's been working on.

Musical score for 'Jessie's Hornpipe' in G major, 2/4 time. The score consists of four staves of music. The first staff is marked with a repeat sign and a double bar line. The second staff is marked with a repeat sign and a double bar line. The third staff is marked with a repeat sign and a double bar line. The fourth staff is marked with a repeat sign and a double bar line. The tempo is marked as ♩ = 180. The key signature is one sharp (F#).

1794

attrib. to Ards Collection

Jessie's Hornpipe

We also dance Highland Mary to Highland Mary (Old Tom of Oxford).

Musical score for 'Highland Mary' in G major, 2/4 time. The score consists of four staves of music. The first staff is marked with a repeat sign and a double bar line. The second staff is marked with a repeat sign and a double bar line. The third staff is marked with a repeat sign and a double bar line. The fourth staff is marked with a repeat sign and a double bar line. The tempo is marked as ♩ = 150. The key signature is one sharp (F#). There are two boxed letters, 'A' and 'B', indicating first and second endings.

A.(A.B)4

Highland Mary

Just As The Tide Was Flowing

$\text{♩} = 160$

5

8

13

Change: Rochdale Coconut Dance.

41

A.(A.B2)4

Haste to the Wedding

$\text{♩} = 92$

5

8

13

102

Change: Lanigan's Ball.

Musical score for 'King Of The Fairies' in G major, 3/4 time. The score consists of four staves of music. The tempo is marked as quarter note = 140. The key signature has one sharp (F#). The chords used are D, Em, Bm, and C. The first staff (measures 1-4) has a repeat sign. The second staff (measures 5-8) includes triplets. The third staff (measures 9-12) also includes triplets. The fourth staff (measures 13-16) has a repeat sign.

King Of The Fairies

This is danced by a variable number of dancers. Repeat as many times as necessary. We dance this very infrequently, and only when Emma is around to remind us how to do it.

Musical score for 'Greenham Long Odds' in G major, 3/4 time. The score consists of three staves of music. The tempo is marked as quarter note = 120. The key signature has one sharp (F#). The chords used are G, D, Am, and C. The first staff (measures 1-4) has a repeat sign. The second staff (measures 5-8) has a boxed 'B' below it. The third staff (measures 9-12) has a boxed 'A' below it.

Greenham Long Odds

(A2:B)

Lanigan's Ball

$\text{♩} = 180$

Em D

5 Em Bm Em

9 Em D

13 Em Bm 1 Em 2 Em

Detailed description: This block contains the musical notation for the first 16 measures of 'Lanigan's Ball'. It is written in treble clef with a key signature of one sharp (F#). The tempo is marked as quarter note = 180. The piece consists of four staves of music. The first staff (measures 1-4) starts with an Em chord and a D chord. The second staff (measures 5-8) includes Em, Bm, and Em chords. The third staff (measures 9-12) includes Em and D chords. The fourth staff (measures 13-16) includes Em, Bm, and two first endings of Em, followed by a second ending of Em. The piece concludes with a double bar line.

43

A.(A.B2)4

Getting Upstairs

$\text{♩} = 168$

A G D7 C G D7 G

5 G D7 C G D7 G

B G C D7 C G

14 D7 C G D7 G

Detailed description: This block contains the musical notation for the first 17 measures of 'Getting Upstairs'. It is written in treble clef with a key signature of one sharp (F#). The tempo is marked as quarter note = 168. The piece is divided into sections A, B, and a final section. Section A (measures 1-8) has chords G, D7, C, G, D7, G. Section B (measures 9-13) has chords G, C, D7, C, G. The final section (measures 14-17) has chords D7, C, G, D7, G. The piece concludes with a double bar line.

100

Louth Quickstep

♩ = 100

Musical score for Louth Quickstep, measures 1-13. The score is in G major (one sharp) and 2/4 time. It consists of four staves of music. The first staff (measures 1-4) has chords G, C, D, G, D, C, D. The second staff (measures 5-8) has chords G, C, D, G. The third staff (measures 9-12) has chords G, D, G, C, D, G. The fourth staff (measures 13) has chords G, D, C, D, G. The piece ends with a double bar line and repeat dots.

45

A.(A2.(BA)2)4

Country Gardens

♩ = 150

Musical score for Country Gardens, measures 1-12. The score is in G major (one sharp) and 2/4 time. It consists of three staves of music. The first staff (measures 1-4) has chords G, C, D7, G, G, C, D7, G. The second staff (measures 5-8) has chords G, D, G, D, G, A7, D7. The third staff (measures 9-12) has chords G, C, D7, G, C, D7, G. The piece ends with a double bar line and repeat dots.

98

Musical score for 'Maguire and Patterson'. The score consists of four staves of music in G major. The first staff (measures 25-28) has a key signature change from one sharp to two sharps. The second staff (measures 17-20) includes a Bm chord. The third staff (measures 9-12) includes a Bm chord. The fourth staff (measures 1-4) includes a Bm chord. A tempo marking of ♩ = 120 is located at the bottom right of the score.

Maguire and Patterson

Musical score for 'Constant Billy'. The score consists of three staves of music in G major. The first staff (measures 8-11) includes a Bm chord. The second staff (measures 4-7) includes a Bm chord. The third staff (measures 1-3) includes a Bm chord. A tempo marking of ♩ = 130 is located at the bottom right of the score.

Constant Billy

A.(A2.B2)4

Mazurka d' Auvergne

$\text{♩} = 120$

5

8

13

In previous editions of the Booke, this was incorrectly titled *Mazurka Avignon*.

A3.B.C Bonny Green Garters

$\text{♩} = 100$

6

14

Change: Mazurka d'Auvergne.

Musical score for Mazurka de Laplean, measures 5-8. It consists of four staves of music in G major, 3/4 time. The tempo is marked as quarter note = 130. The notes are: Staff 1: G4, A4, B4, C5, B4, A4, G4, F#4, E4, D4, C4, G3. Staff 2: G4, A4, B4, C5, B4, A4, G4, F#4, E4, D4, C4, G3. Staff 3: G4, A4, B4, C5, B4, A4, G4, F#4, E4, D4, C4, G3. Staff 4: G4, A4, B4, C5, B4, A4, G4, F#4, E4, D4, C4, G3.

Mazurka de Laplean

Musical score for Bobbing Around, measures 5-8. It consists of four staves of music in G major, 3/4 time. The tempo is marked as quarter note = 92. The notes are: Staff 1: G4, A4, B4, C5, B4, A4, G4, F#4, E4, D4, C4, G3. Staff 2: G4, A4, B4, C5, B4, A4, G4, F#4, E4, D4, C4, G3. Staff 3: G4, A4, B4, C5, B4, A4, G4, F#4, E4, D4, C4, G3. Staff 4: G4, A4, B4, C5, B4, A4, G4, F#4, E4, D4, C4, G3. There are first and second endings marked with brackets and numbers 1 and 2.

Bobbing Around

A(A)B4

Michael Turner's Waltz

♩ = 140

Chords: G, D, G, C, G, D, G, D, G, Em, C, G, G, D, G

Measures: 1, 5, 8, 11

49

(A2.B)6.C

Blue Bells of Scotland

♩ = 160

Oh where oh where pub has my high - - land las - - sie gone?
 She's gone to the pub with her bells and bald - ricks on!

Chords: G, C, G, C, G, D7, G, G, Bm, Em, A7, D, A7, D, C, D7, G, C, G, C, G, D7, G

Measures: 4, 11

♩ = 260

Double time

Chords: C, G, C, G, D7, 1 G, 2 G

Measures: 17, 18

94

Mount Hills

$\text{♩} = 152$

1 5 9 13

G D G Am G D Am D G D C G D G Em Am Am7 D G

51

A.(A.B2)4

Bean Setting

$\text{♩} = 80$

1 5 8

A G D7 3 G G D7 3 G G D7 3 G G D7 3 G G D7 C G D7 G

92

A nice little waltz from Mudgee in New South Wales. It's not quite a Havoc session regular yet, but I like it.

Musical score for 'The Mudgee Waltz' in G major, 3/4 time. The score consists of four staves of music. The tempo is marked as quarter note = 140. The key signature has one sharp (F#). The chords used are G, D, Am, D7, and C. The piece ends with a double bar line.

The Mudgee Waltz

Musical score for 'The Banks of the Dee' in G major, 3/4 time. The score consists of four staves of music. The tempo is marked as quarter note = 120. The key signature has one sharp (F#). The chords used are G, D, C, D7, and B. The piece includes a 'Slows' section marked with a box 'C' and a tempo of 180. The piece ends with a double bar line.

The Banks of the Dee (A2.B2)2.(A2.C2)2

New Road To Alston

♩ = 150

Musical score for 'New Road To Alston' in G major, 4/4 time. The score consists of four staves of music. The first staff starts with a tempo marking of ♩ = 150. The key signature has one sharp (F#). The chord progression is Am, Em, Am, Em, Am. The second staff starts at measure 5 and ends with a double bar line. The third staff starts at measure 9 and ends with a double bar line. The fourth staff starts at measure 13 and ends with a double bar line.

53

A.(A.B3)3.A

Banbury Bill

♩ = 170

Musical score for 'Banbury Bill' in D major, 4/4 time. The score consists of four staves of music. The first staff starts with a tempo marking of ♩ = 170. The key signature has two sharps (F# and C#). The chord progression is A, D, G, A7, D, A7. The second staff starts at measure 5 and ends with a double bar line. The third staff starts at measure 8 and ends with a double bar line. The fourth staff starts at measure 13 and ends with a double bar line.

90

From Paul Hardy's Session Tunebook.

Musical notation for 'Orange in Bloom' in G major, 3/4 time. The score consists of three staves. The first staff is marked with a repeat sign and a first ending bracket. The second staff is marked with a measure rest of 8 measures. The third staff is marked with a measure rest of 140 measures. Chord symbols G, D7, Am, and Em are placed below the notes.

Orange in Bloom Sherborne Waltz

Musical notation for 'Balance the Straw' in G major, 3/4 time. The score consists of three staves. The first staff is marked with a measure rest of 9 measures. The second staff is marked with a measure rest of 5 measures and contains a boxed section labeled 'B'. The third staff is marked with a measure rest of 130 measures and contains a boxed section labeled 'A'. Chord symbols G, D7, and C are placed below the notes.

Balance the Straw (A2,B2)4

The Oyster Girl

♩ = 120

5

8

13

55



Barbara Payne, *Constant Billy*

This book provides the dots for the music to all the dances performed by Cry Havoc. The name of the dance is given as the tune title. If the name of the tune differs from the name of the dance, the tune name is given in the subtitle.

Poplar Grove

Veronica Wagner

$\text{♩} = 130$

5

9

13

A tune from the Squire of Sydney's Black Joak Morris. Put her up on her travels, and maybe she'll write you one too.

57

The Winster Gallop

$\text{♩} = 210$

5

9

13

Change: Salmon Tails.

86

Rochdale Coconut Dance

$\text{♩} = 160$

Em Em Am G D7 Em

5 Em Em Am G D7 Em

9 G D G D

13 G D G D G

59

Whinshields Hornpipe

J. L. Dunk

$\text{♩} = 160$

G D7 G C

6 G 1 Am A7 D7 2 Am D7 G G Am

12 D7 G A7 D D7 G

18 D7 G D7 C D7 G

84

A derisive piece of music played to accompany punishment of soldiers in the 18th and 19th centuries, typically drumming out incorrigible offenders. Listen out for *Poor old soldier*.

Change: Captain Lanoë's Quick March

Musical score for Captain Lanoë's Quick March, consisting of four staves of music in G major. The tempo is marked as ♩ = 160. The first staff is marked with a repeat sign and a first ending bracket. The second staff begins with a measure rest. The third staff is marked with a repeat sign and a first ending bracket. The fourth staff begins with a measure rest. Chord symbols G, D, C, Em, and D are placed below the notes.

The Rogues' March

Musical score for Wals voor Polle, consisting of four staves of music in G major. The tempo is marked as ♩ = 180. The first staff is marked with a repeat sign and a first ending bracket. The second staff begins with a measure rest. The third staff is marked with a repeat sign and a first ending bracket. The fourth staff begins with a measure rest. Chord symbols G, D, C, and D are placed below the notes.

Wals voor Polle

Wim Poesen

La Roulante

Jean Blanchard

$\text{♩} = 104$

D Am D G D D Em

5 D Em D Am D 1 2

9 Em G D

13 1 2

61

Valse Musette

$\text{♩} = 160$

Em C D Em D B

9 Em C D Em D B Em

17 C Em D B

25 C Em D B Em

A French tune Sue picked up. Previously it appeared simply as *Sue's French Tune*, but Sue says she's seen it called *Valse Musette*, so let's go with that.

82

Ruffy Tufty

$\text{♩} = 180$

Chords: D, D, G, D, 1 D, 2 D, G, D, G, D, 1 D G, 2 D G, G, C, D, G, C, D, D, D, G

63

Tom Tolley's Hornpipe

$\text{♩} = 132$

Chords: G, C, C, D7, C, G, C, D, G, D7, G, Em, D7, G, Em, D, G, G, G, Em, Am, D, C, G, D7, G

Change: Iron Legs.

80

Seacourt Bridge

Ed Pritchard

Musical score for "Seacourt Bridge" in G major, 4/4 time, tempo 134. The score consists of four staves of music. The first staff starts with a treble clef, a key signature of one sharp (F#), and a tempo marking of 134. The melody begins with a G chord. The second staff continues the melody, featuring a C chord and a first ending with a D chord and a triplet of eighth notes. The third staff includes a G chord, a C chord, an Em7 chord, and a D chord. The fourth staff concludes the piece with a G chord and a second ending with a D chord and a G chord.

Ed's tribute to the Botley pub that is not only kind enough to host our after-practice sessions over the winter, but gives us something to eat too. Thanks Tracey!

Three Around Three The Pleasure Of The Town

Musical score for "Three Around Three" in G major, 4/4 time, tempo 160. The score consists of four staves of music. The first staff starts with a treble clef, a key signature of one sharp (F#), and a tempo marking of 160. The melody begins with a G chord. The second staff continues the melody, featuring a D chord, a G chord, a C chord, a G chord, and a G D G sequence. The third staff includes a D chord, a G chord, a C chord, a G chord, and a D chord. The fourth staff concludes the piece with a D chord, a G chord, a C chord, a C chord, a D chord, and a G chord.

Shandy Hall

♩ = 140

5

8

13

Another tune from Susie.

Teatree Waltz

♩ = 120

9

17

27

37

Change: Bear Dance.

Musical score for 'The Sheriff's Ride' in G major, 2/4 time. The score consists of four staves. The first staff is a treble clef with a key signature of one sharp (F#) and a tempo marking of quarter note = 160. The second staff is an alto clef with a key signature of one sharp (F#). The third staff is a treble clef with a key signature of one sharp (F#). The fourth staff is an alto clef with a key signature of one sharp (F#). The piece is marked with repeat signs at the beginning and end of the first and third staves. Chord markings are placed below the notes: Em, Am, Bm, and Em.

The Sheriff's Ride

Change: Mount Hills

Musical score for 'Sussex Cotillion' in G major, 2/4 time. The score consists of four staves. The first staff is a treble clef with a key signature of one sharp (F#) and a tempo marking of quarter note = 130. The second staff is an alto clef with a key signature of one sharp (F#). The third staff is a treble clef with a key signature of one sharp (F#). The fourth staff is an alto clef with a key signature of one sharp (F#). The piece is marked with repeat signs at the beginning and end of the first and third staves. Chord markings are placed below the notes: G, C, D, Em, and Am.

Sussex Cotillion

Si Bheag Si Mhor

Turlough O'Carolan
(1670-1736)

♩ = 140

8

16

24

69

Springvals

arr. Ceylon Wallin

♩ = 130

5

9

13

74

13
9
5
G = 104

*Byss-Calle (Carl Ersson
Bössa, 1783-1847)*

Slängpolska 32

From Paul Hardy's Session Tunebook.

19
13
7
G = 160

Ian Burns

Spotskerry

The Sloe

♩ = 140

D A D G A D

5 D A D G A D

8 D D A D

13 A D G A D

71

Soldier's Joy

The Forester

♩ = 140

D G D E7 A7

5 D G D A7 D

8 D A7 D E7 A

13 D A7 D A7 D

72